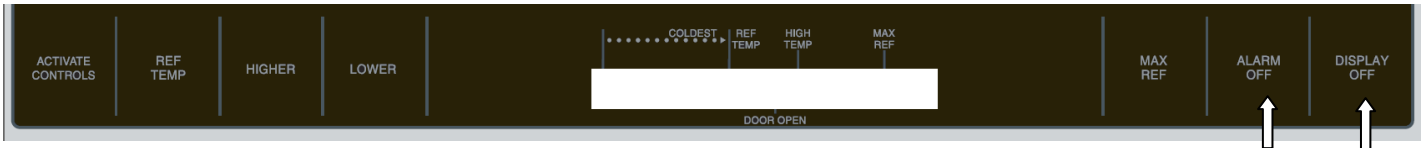


Viking Electronic Control Test Procedures All Refrigerator

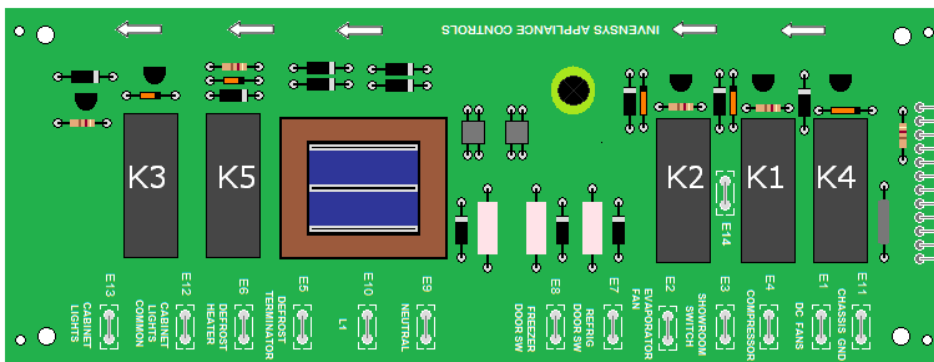
Before starting this test, open the door and apply tape to the upper fan switch and the lower light switch in order to perform this test properly. You will need to also switch the main power switch to the *OFF* position.

To enter, depress and hold both the **ALARM OFF** & **DISPLAY OFF** buttons at the same time. While holding these pads, switch the main power switch to the ON position. When you hear 3 tones you have successfully entered the Test program. **NOTE:** *During this test, the display will remain blank.*



Push and Hold then turn Main power switch ON.

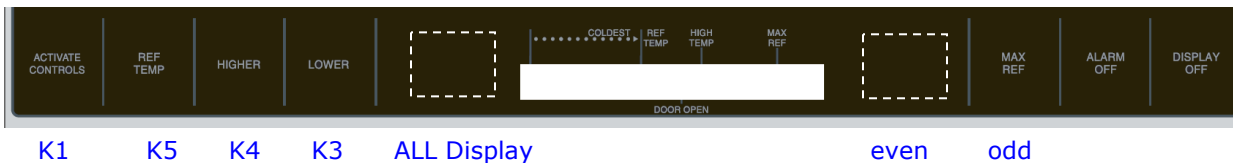
The drawing below shows the 5 relays that are mounted on the High Voltage board. To the right is a legend that shows what each relay operates.



Relays

- K3 - Lights
- K5 - Defrost Heater
- K2 - Evaporator Fans (*See note*)
- K1 - Compressor / Condenser
- K4 - Evaporator / Service fans (Low Volts-30VDC)

* Note: the K2 relay is not activated by a keypad on the AR models.



Press and hold the **ACTIVATE CONTROLS** pad. The **K1** relay will activate. This will send power to both the Inverter and the condenser fan motor. In Test mode, only the condenser fan will operate. This will test to see if the **K1** relay is working. The compressor will not operate. Release the pad to disengage the relay.

Press and hold the **REF TEMP** pad. The **K5** relay will activate. The **K5** relay is used to operate the defrost heater on the AF, BM and SxS models. Though there is not defrost system on the AR, the relay should still activate. Release the pad to disengage the relay.

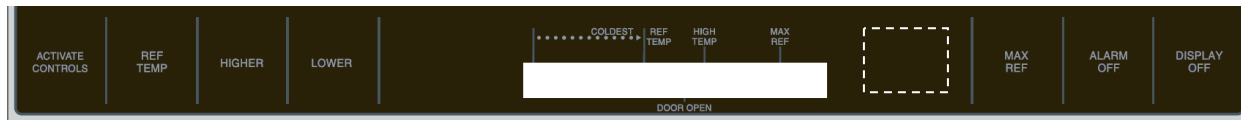
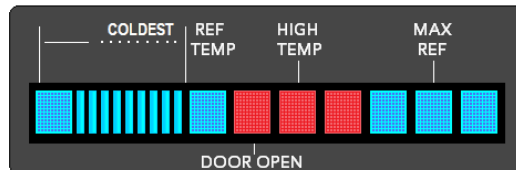
Press and hold the **HIGHER** pad. The **K4** relay will activate. The **K4** relay is used to send the 30 VDC produced by the HV board on board transformer. This power is sent to the Temperature translator (power supply) to activate to internal relay. If the service fan is connected at the base, it too will run.

Press and **LOWER** pad. The **K3** relay will activate. The **K3** relay is used to send neutral to the lights and fans. This is a N.C. relay and is opened in Sabbath mode.



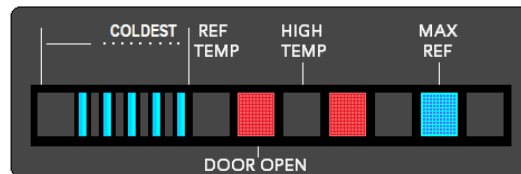
ALL Display

Press and hold the **HIDDEN BUTTON** pad (Shown above). All digits in the display should illuminate as shown here:



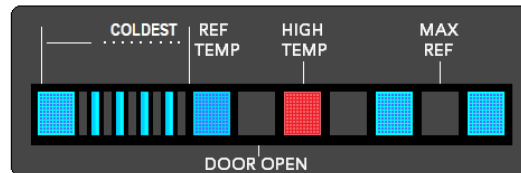
Even Display

Press and hold the **HIDDEN BUTTON** (Shown above). This pad is actually the **MAX FRZ** pad used to access the programming mode. All **Even** digits in the display should illuminate as shown here:



Odd Display

Press and hold the **MAX REF** (Shown above). All **Odd** digits in the display should illuminate as shown here:



The Test program will time out after 5 minutes. Switching the Main Power OFF then back ON will also reset the test.